

## **FROM THE PREZ.....**

Fall time must officially be upon us. There's Friday night football now, VT flags and magnets on cars, sounds in the distance from high school marching bands practicing, leaves falling as well as the temperature at night. Honestly I'm glad fall has arrived finally. It's been a long hot humid summer and the relief of fall time will be welcomed.

One of the last official events of the summer as far as club activities is the annual pic-nic (aka pig out) at Tim Wards house. Once again this year Tim and his mom went all out to host the club cook out. Tim spent most of the night flipping burgers and dogs until finally he said "enough cooking them, I want to eat them". So some relief was brought in so Tim could have is turn at enjoying the food. Speaking of food if you left there hungry it was your fault. There was enough food there to honestly feed an army (well we are pretty big eaters) and of all various types. There were several kinds of salads, side dishes, finger foods and of course desserts that made you gain 5 pounds just looking at them. Thanks again to Tim and his mom for hosting this event again this year.

As far as shows go I think we are slowing down for the rest of the year. I know some of the members will be going to Penn Con that is coming up. So I guess it's time to get ready for winter and stock up on supplies to work on those winter projects and get ready for next year's show season. Hopefully all of us can get a few new projects completed.

Well I guess till next month keep the glue flowing and the paint spraying!

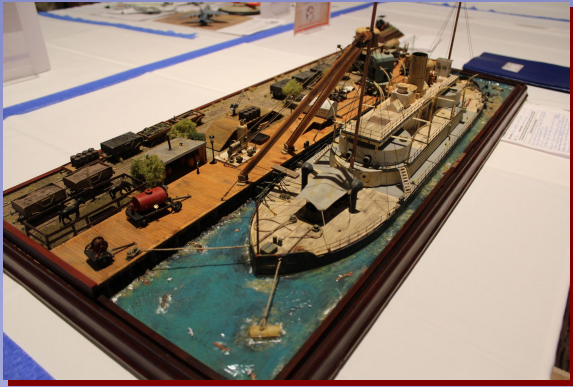
Rocky

---

### ***Fun Times In Columbus For The IPMS Nationals***

Submitted by: Rocky Sink


Several members made the trip to Columbus, Ohio on July 22-25 for the IPMS National Convention. Members who were spotted during the show were Tim Ward, Bob Rohrback and his wife Sharon, Roy Mabry and Rocky Sink. While it was a small job going from room to room to view the vendors it was worth it. There were vendors selling everything you can imagine including tools and accessories, kits, books and magazines, paints and details sets for kits. If your bank account didn't have a dent in it before going it did afterwards for sure. As for the contest there were close to 3000 entries and all were deserving of an award. Some of the most unbelievable things can show up at Nationals each year. On Thursday night all the members along with Mark and Alex from Star Fighter Decals went out to one of the local Italian restaurants and "huge helping" was an understatement. The waiter suggested that we order one meal for each two people in the group. Everyone thought that was a little odd but everyone paired up and order a meal for each two. Good thing they did.....each meal could literally feed 3-4 people. The walk back to the hotel was a little rough considering everyone was stuffed. All in all it was a great show and congratulations go to Rocky for having four of his models place in the contest. Hopefully everyone can make it out to Columbia, South Carolina next year for the 2016 National Convention.



# Upcoming Shows and Events

## September 2015


9/19/2015      **Pennsylvania**  
CARLISLE  
Region 2

**PennCon 2015**   
U.S. ARMY HERITAGE AND EDUCATION CENTER  
950 SOLDIERS DR. [Map](#)  
CenPennIPMS  
[Chester Mohn](#) 717 774 4803

---

## October 2015


10/17/2015      **North Carolina**  
Salisbury  
Region 12

**2015 IPMS Arm/Air Invitational Contest**   
Family Ministry Center (Old Salisbury YMCA)  
220 North Fulton Street [Map](#)  
IPMS Arm/Air  
[Sam Morgan](#) 704-647-0885

---

## November 2015

11/7/2015      **Tennessee**  
Murfreesboro  
Region 3

**IPMS Middle Tennessee Model Expo**   
Lane Agri Park  
315 John Rice Blvd [Map](#)  
IPMS Middle Tennessee  
[Tom Winter](#) 615-479-7737

---

## December 2015

12/4/2015      RVIPMS Annual Christmas Party 6:30PM at The Roanoker

*Remember to check the websites and/or chapter contact for up to the date info and details on the contests.*

### Club Officers

**President:** Rocky Sink

[snkchevcol@aol.com](mailto:snkchevcol@aol.com)

**Secretary:** Bob Rohrback

[rjrohrback@aol.com](mailto:rjrohrback@aol.com)

**Vice-President:** Jay Dennis

[Jaysmr239@gmail.com](mailto:Jaysmr239@gmail.com)

**Treasurer:** Greg Clower

[GClower@aol.com](mailto:GClower@aol.com)

# Club Reminders

The September business meeting will be on September 24, 2015 at 7PM

Cliff Young volunteered to bring refreshments for the business meeting.

The club will have a modeling demonstration at the Rail Yard on Saturday, September 19<sup>th</sup>. Participants should bring their own tables and chairs as well as current projects they are working on.

Secretary Bob Rohrback reminded everyone to let him know current expiration dates of their national memberships so that he can apply for a renewal of the club's charter for 2016. Bob will be collecting this information beginning with the September business meeting.

The club's annual Christmas party will be held at the Roanoker on December 4<sup>th</sup> beginning at 6:30 p.m. The menu will feature entrees running between \$6.00 and \$8.00 in cost.

---

## **SOMUA S35 4<sup>th</sup> Cuirassier Regiment May 1940 France**

Submitted by: Terry Eastman



This 1/35<sup>th</sup> scale Tamiya kit was a challenge. Not the least of which was the assembly of 102 links per track. There was also poor fit of mounts for the rear drive sprockets.

The tarp used is a folded teabag.

Decals for three S35's are provided. The camouflage schemes are exotic.

Tamiya/Humbrol Paints used:

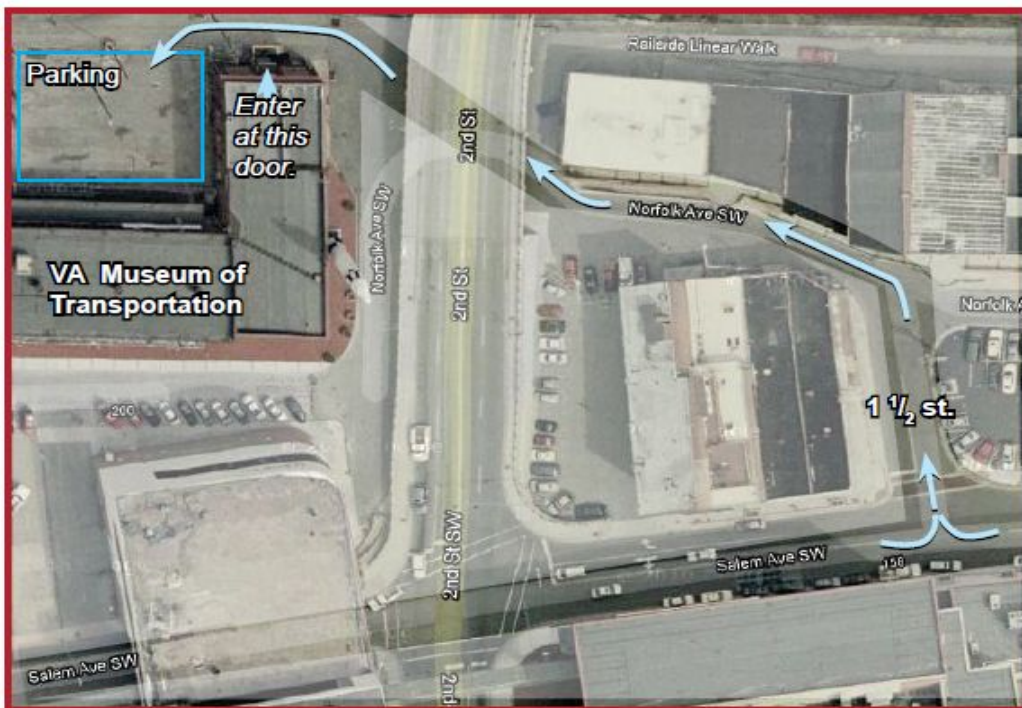
XF-21 Sky  
XF-58 Olive Green  
XF-64 Red Brown  
Matt 59 (Blue)

Field dust was created by dirt diluted in water and brushed on the model.



**RVIPMS**  
**P.O. Box 20841**  
**Roanoke, VA. 24018**

If you have any questions about the club, meetings, or need directions, contact us at; [www.rvipms.com](http://www.rvipms.com) or mail written correspondence to: Roanoke Valley IPMS P.O. Box 20841 Roanoke, VA. 24018.



**RVIPMS meetings are held at the Virginia Museum of Transportation.**

**How to get there;**

From Salem Ave. turn onto 1 1/2 St. Drive the very short distance to Norfolk Ave. SW and turn left. Follow under the 2nd st. over-pass to the back of the museum. The fenced parking lot is behind the building as indicated in the picture. Enter through the rear door, (the main entrance will be locked) walk down the hallway and turn right. Meeting room is in right corner.

**When to get there;**

The club has two meetings per month, with a couple exceptions. Build meetings are the second Thursday each month. Business meetings are the fourth Thursday each month. All meetings start at 7 p.m. For further details visit our website. [www.rvipms.com](http://www.rvipms.com)

Sprue is the official publication of the Roanoke Valley Chapter of the International Plastic Modelers Society. The content of Sprue does not necessarily represent the official views of, nor is it endorsed by IPMS/USA or IPMS/Roanoke Valley. Opinions expressed are those of the authors.