

SPRUE



Official Newsletter of the Roanoke Valley IPMS Chapter

Vol. 20, Issue 2

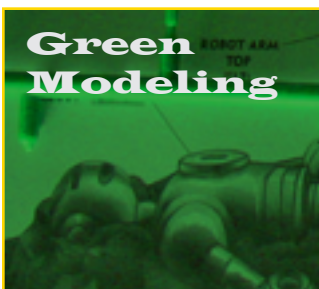
Feb. 2012



Models as ART!



Stukas & More



Green Modeling



From the Prez...

Everybody got their models ready for our nice jaunt to Richmond on the 25th? I know I do — NOT!

Once again your fearless leader is having trouble finding where he put that elusive tube of glue. I may have to break down and buy a new one. Does Pactra still make flat black paint? I think mine dried up. No, seriously, we have a big trip to lead off the new contest season to the ODO on February 25, the start of what is building up to be a very big and important year in Region 2.

We follow the Old Dominion Open with the MDA Model Car show at the Roanoke Civic Center the first weekend of March, the NOVA Model Classic in late spring and then our own 16th Annual Virginia Shoot-Out

on the 14th of July. This is one month earlier in order to not interfere with the IPMS Nationals in Orlando in August. If you can't find something to get excited about in modeling, then maybe you need to look at another kind of modeling. Not swimsuit modeling though, I've seen some of you around the pool. OUCH!!!!

Remember, Terry will have slides to show at the meeting of his trips to the Musee Armee de L'Air (that's Frog for French Air Force Museum). Should be tres' chic.

Be there!!!
Tim Ward

Visit www.rvipms.com for the latest info on shows, pictures, contacts and more.



From the Crow's Nest

By Tim Ward

You know, just when I was getting used to seeing a bunch of dumb kids run around in their shorts and T-shirts in February, "old man winter" reaches down and bites everyone in the butt.

I think this happened last night because as I'm writing this it's colder than a 'well-digger's butt' outside. GOOD! That means it's time to get some model building done

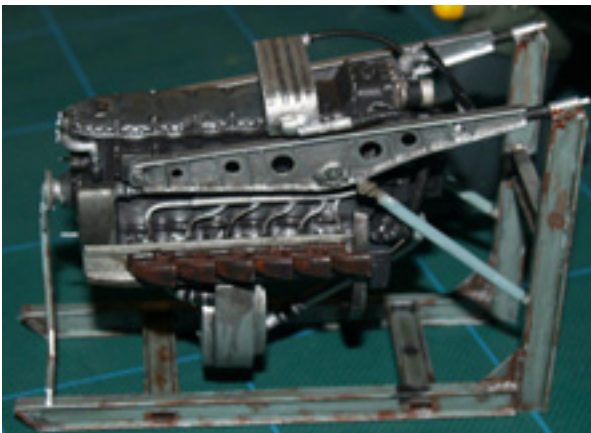
And from what I've seen at the last few building meetings there is a lot of building going on. James Herndon recently completed a very nice 1/24th scale Stuka which is one of the nicest examples of this subject as I have ever seen. Great job, James!

And Jay Dennis, has not just been playing around on the keyboard maintaining our web site, he is putting together a very nice collection of models with the name Enterprise. Looks like the start of something big, or at least "Enterprising." Sorry, there was a pun screaming to get out. LOL

And our own Bob Rohrback is always working on something new. The other night he had a 1/144 E-2 Hawkeye that looked very cool. Look forward to seeing it and more from all our guys for the trip to Richmond on the 25th.

The RVIPMS bus will be pulling out bright and early Saturday morning at 6 a.m. from the usual meeting place, in the parking lot in front of the old Hobby USA.

If you're interested in going please let me know by the meeting Thursday night. If you are a last minute addition, please call me at 540-353-2177 (cell). It's going to be a lot of fun, we can enter some models, play the raffle, win some awards, you know the drill.



Check out our facebook page. Post some of your own modeling.
Roanoke Valley Chapter of IPMS Group Page

• **R&D Dept.**

Junkers 87 G-2 STUKA
"Der Kannonen Vogel"
Major Hans-Ulrich Rudel
Kommodore SG2
Summer 1944, Russia



This is the 1/72nd scale ACADEMY kit of the JU87 G-2 which was a tank killer armed with two 37 mm anti-tank guns in underwing gondolas. It was used successfully on the Eastern Front against Russian AVF's.

If ever there was an aviator who was "a one man wrecking crew", it was Rudel. He flew over 2,500 missions and destroyed 519 tanks, sank a battleship, a cruiser, and 70 landing craft. Over 800 land vehicles, 150 artillery sites, 4 armoured trains, and many bridges. He also had nine aerial kills.

Stalin posted a reward of 100,000 rubles for Rudel, dead or alive.

Following the war like many Nazis he immigrated to Argentina. In 1952, he returned to Germany, dying at age 66 in 1982.

Note: In keeping with political correctness, kit decals of the swastika were not provided. Those on the model are from the decal scrap box.



Models as ART!

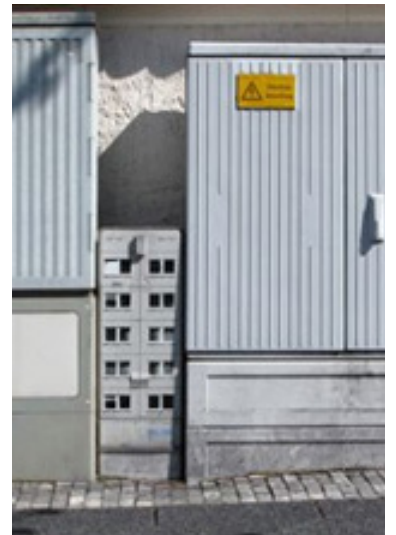
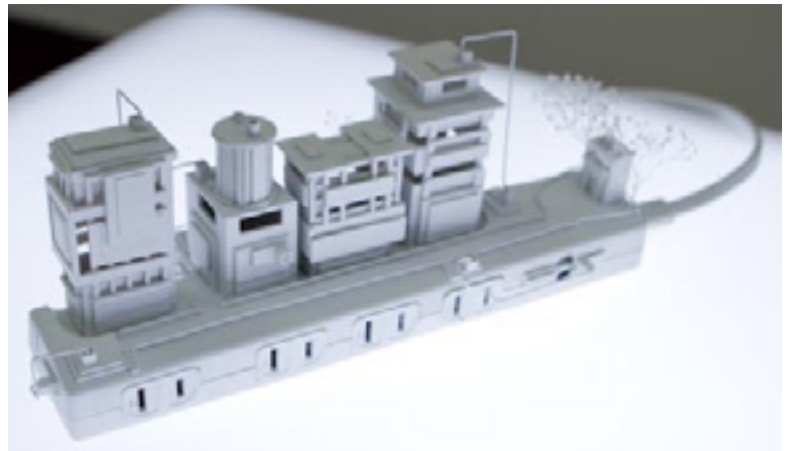
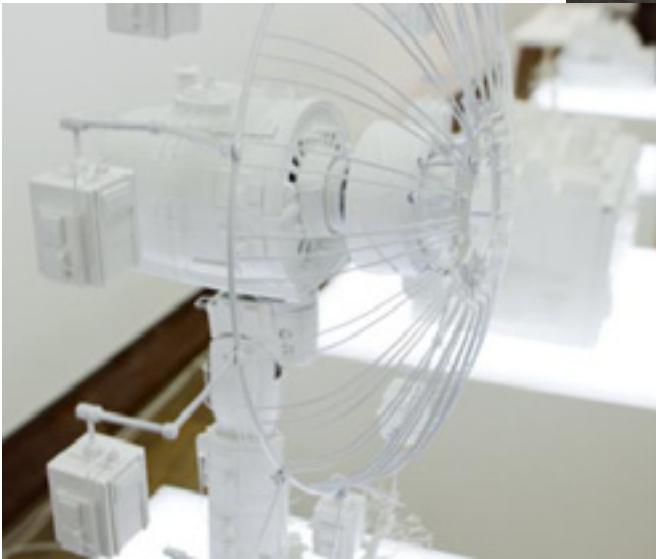


I became aware of this art movement a few years ago. A few European artists setting up scenes on common city streets using model railroad figures and props. Several photos are taken to establish the scope of the scene and its location. The movement

has spread to other artists throughout the world. Sometime making statements. Sometimes just having fun. These miniature scenes are very creative, entertaining and thought provoking.

Here are a few examples —





In a similar approach some artists create miniature architecture out of everyday objects. Like power strips or fans.

By applying custom printouts of actual structures to industrial or municipal objects, mini-buildings are created. These can include heat pumps, planters

and phone wire boxes. Like the tiny people projects, it creates an entertaining view.

Models are already an art form. Now street artists are taking it further.



Green Modeling

The new model of the silver age Green Lantern is really cool. Sixteen of the 18 pieces are molded in green styrene. The remaining 2 in clear green styrene. These 2 pieces support the figure in "flight" mode. This is the first time the character has been produced in an injection molded kit. It is 1/8 scale to match some of the original Auroara comic scenes kits. Looks like it will be fun to build right out of the box. Or go nuts with lighting and super detailing. The kit is by Moebius.



Paint Removal ...

Occasionally you have a need to remove a less than stellar or just plain and old paint job.

Or you bought a classic at a swap meet that still carries the paint from the original owner. And you want to paint it your way.

Here are a few chemicals for removing paint, decals and sometimes putty from plastic model parts.

- Oven Cleaner
- Brake Fluid
- Household Cleaners
- Testors or Polly S Easy Lift Off
- Environment Friendly Cleaners
- Castrol Super Clean (or similar super cleaners)
- Effervecent Denture cleansers



Most of these items are Remember to use proper ventilation and health safety precautions. Gloves, respirators for the more stinky cleaners and some eye protection.

Model responsibly or you'll never finish that stash.

Most commercial paint removers are too aggressive for styrene and some resins from which our kits are molded. So don't use them.

THE ROANOKE VALLEY CHARITY CAR SHOW COMMITTEE, INC. PRESENTS THE

MDA

*Model Car
Contest*

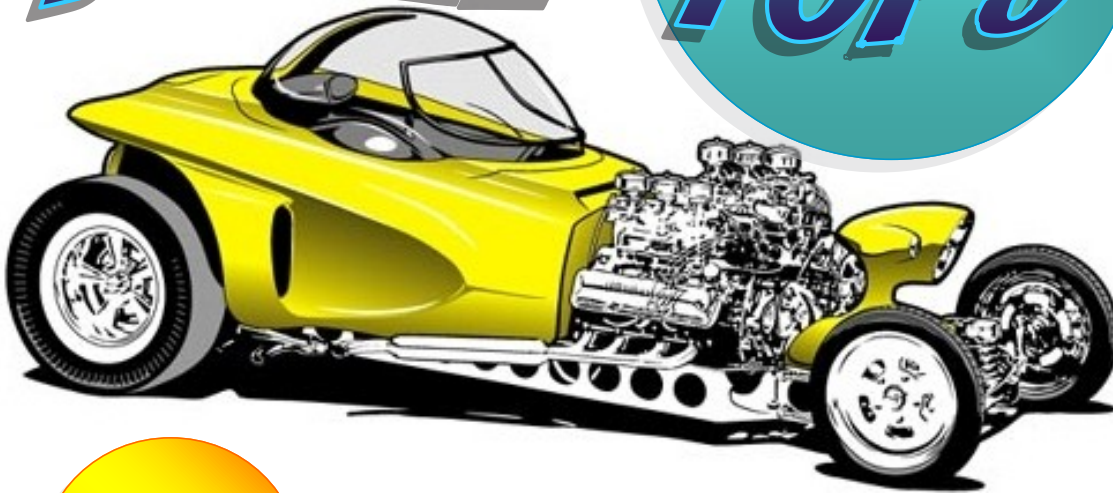
MARCH 3, 2012
ROANOKE CIVIC CENTER
ROANOKE, VIRGINIA
9:00AM - 4:00PM

Swap Meet & Show

AWARDS WILL BE GIVEN FOR: FIRST, SECOND, AND THIRD PLACE IN EACH CLASS, BEST ENGINE, BEST INTERIOR, BEST PAINT AND BEST IN SHOW

CONTEST THEME:

BUBBLE TOPS



THE MDA MODEL CAR CONTEST IS PART OF A THREE DAY FULL SIZE ROD AND CUSTOM CAR SHOW. THE MODEL CAR CONTEST AND SWAP MEET IS A ONE DAY ONLY SHOW ON SATURDAY MARCH, 3RD FROM 9:00 AM TO 4:00 PM.

ALL PROCEEDS TO BENEFIT THE MUSCULAR DYSTROPHY ASSOCIATION

WWW.MDACARSHOW.COM

IPMS Region 2 Convection
Oct. 4 & 5, 2013
Theme: Nose Art
Roanoke Civic Center
Roanoke, VA



Nose Art Theme
Remember it can be on ANY vehicle.



STAY TUNED IN!
MORE DETAILS
EN ROUTE!

— Reason's to Build Stuff —

NOVA Model Classic
May 12, 2012
Fairfax, VA

Catawba Valley Scale Modelers
Contest and Swap Meet
Mar. 17, 2012
Statesville, NC

Smokey Mountain Mini-Con
Mar. 24, 2012
Knoxville, TN
WrightCon 2012 - R4 Regional
April 13 - 14, 2012
Wright-Patterson AFB, OH

NOVA Model Classic
May 12, 2012
Fairfax, VA

Wonderfest
May 26 - 27, 2012
Louisville, KY

The Virginia Shootout
July 14, 2012
Roanoke Civic Center
Roanoke, VA



IPMS/USA National Convention
Aug. 8 - 11, 2012
Walt Disney World Convetion Center
Lake Buena Vista, FL

**Newsletter
Editor**

Tim Mullins
snillumt@yahoo.com
540-980-3470

Submissions deadline is the first Sunday at 1 p.m. after the build meeting.

Next Business Meeting
Feb. 23, 2012
7 p.m. VMoT

Next Build Meeting
Mar. 8, 2012

Always check websites for up to date info on shows and contests

— Club Officers —

President: Tim Ward
twardf86@aol.com

Secretary: Bob Rohrback
rjrohrback@aol.com

Vice-President: Terry Eastman
t.eastman1@verizon.net

Treasurer: Greg Clower
GClower@aol.com



If you have any questions about the club, meetings, or need directions, contact us at; www.rvipms.com or mail written correspondence to: Roanoke Valley IPMS P.O. Box 20841 Roanoke, VA. 24018

RVIPMS meetings are held at the Virginia Museum of Transportation.

How to get there;

From Salem Ave. turn onto 1 1/2 St. Drive the very short distance to Norfolk Ave. SW and turn left. Follow under the 2nd st. over-pass to the back of the museum. The fenced parking lot is behind the building as indicated in the picture. Enter through the rear door, (the main entrance will be locked) walk down the hallway and turn right. Meeting room is in right corner.

When to get there;

The club has two meetings per month, with a couple exceptions. Build meetings are the second Thursday each month. Business meetings are the fourth Thursday each month. All meetings start at 7 p.m. For further details visit our website. www.rvipms.com



Sprue is the official publication of the Roanoke Valley Chapter of the International Plastic Modelers Society. The content of Sprue does not necessarily represent the official views of, nor is it endorsed by IPMS/USA or IPMS/Roanoke Valley. Opinions expressed are those of the authors.