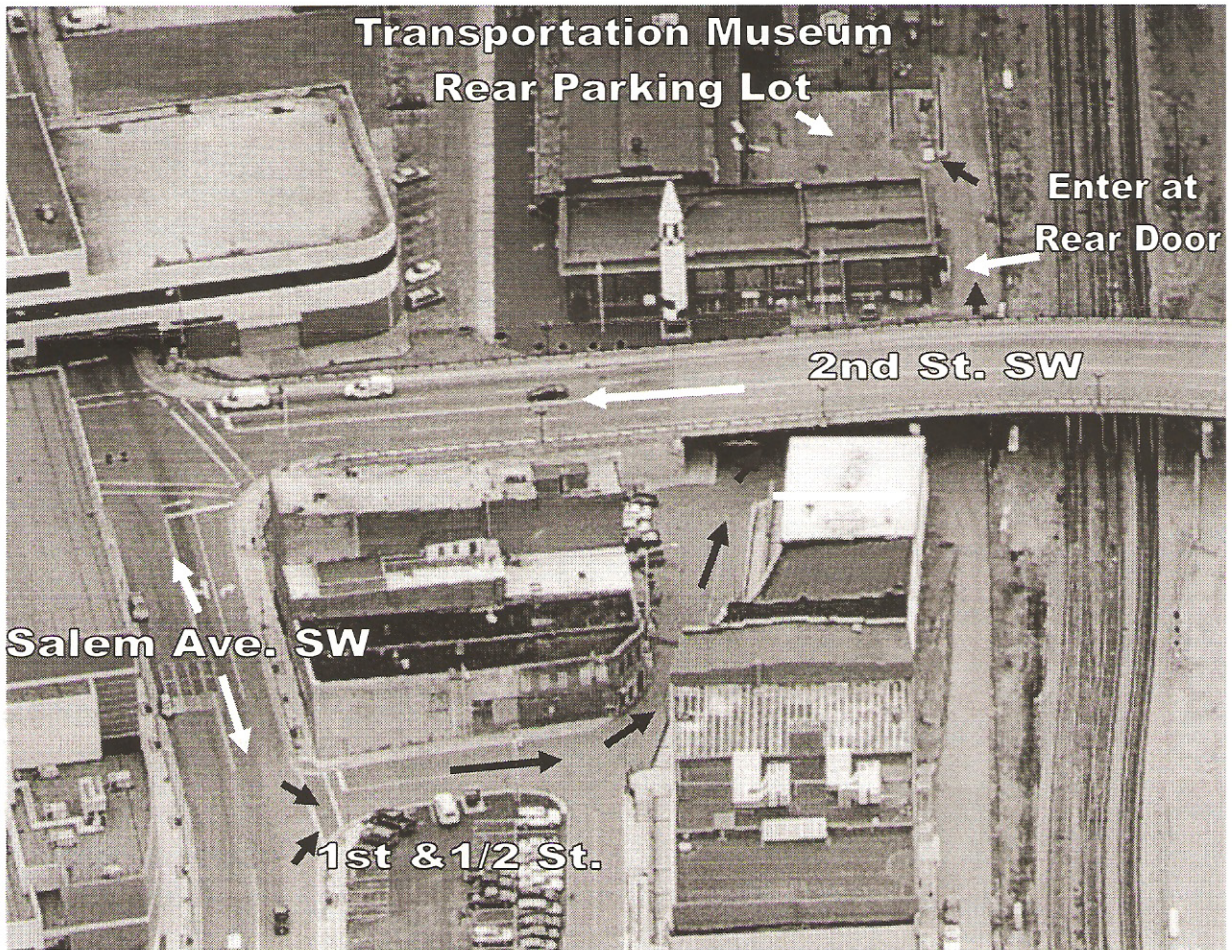


New Meeting Place Starting in January



Greetings members past and present, as of January 2010 the Roanoke Valley chapter of the International Plastic Modeler's Society will be meeting at the Virginia Museum of Transportation. The actual street address is 303 Norfolk Ave SW, Roanoke, Va. (make sure you read the directions below.) The build meeting is still on the second Thursday and the business meeting will still be on the fourth Thursday of every month excluding holidays. Start time is 7:00pm for all meetings.

I've included a picture on how to get to the new meeting place at the Virginia Museum of Transportation. From Salem Ave. turn onto 1 1/2 St.. Follow it around and drive under the overpass and then to the right. The parking lot is behind the museum as indicated in the picture. Enter through the rear door, walk down the hallway and turn right. Don't try to enter though the main entrance, the doors will be locked.

If have problems be sure to give me a call. Hope to see you there !

Dennis Smith - President Roanoke Valley IPMS
540-818-8162