



# SPRUE



The Roanoke Valley Chapter of the International Plastic Modeler's Society

Volume 18, Issue 4

2009 REGION 2 NEWSLETTER OF THE YEAR

April 2010

## Contents

|                        |   |
|------------------------|---|
| From The President     | 1 |
| From the Crow's Nest   | 2 |
| Modeler of the Year    | 2 |
| New Contest, Lexington | 3 |
| MDA Model Car Contest  | 4 |
| France 1944            | 5 |
| Member Points System   | 7 |
| Calendar of Events     | 8 |

## From The President..

After being awarded the 2009 Newsletter Editor of the Year I published last months issue of Sprue with a big typo under the front page picture, yes I know how to spell "diorama", that's what I get for trying to finish up the newsletter at two in the morning.

Elections were held and votes were taken at the march business meeting. The current roster of officers will remain in office for the next fiscal year. Greg Clower as treasure, Bob Rohrbach as secretary, Terry Eastman as vice – president and Dennis Smith as president.

Most of the current members know about the club competitions so this will be for our new members and for everyone else that have forgotten about them. The RVIPMS have the year long "Club Member of the Year" competition that not only encompasses model building for the monthly meetings, but also takes into consideration of all club participation such as attending club displays, submissions to the newsletter and a hole list of other ways you can earn points throughout the year. This competition stretches from January to December with an award given out at the club Christmas Dinner. The other competition is the "Modeler of the Year" championship that takes place throughout the clubs fiscal year from April 1st to March 31st. Points are awarded for model building at the build meetings, completed models and contest entry participation. On page 2 you'll find the points format for the latter of the two contest listed above. The Member of the Year points are listed on page 7 of this issue of Sprue. If you have any questions, suggestions or comments let me know.

The May business meeting will be our annual RVIPMS Springnationals Gravy Drags that are always a popular event. Rules and classes are listed on page 7. There will also a regular open contest for all of you non-automotive types.



**Major Frank McFadden demonstrating the diving procedure that was used by him as a dive bomber in the pacific during WWII at our March 11th meeting.**

## Inside this issue:



**Lexington Model Contest**



**MDA Model Car Contest**



**France August 1944  
By Dr. Jacques Hitzel**

At the June business meeting we will combine our regular club activities with a model swap meet. Bring any of your unwanted kits, supplies or other modeling items to sell. For those that don't wish to sell anything, bring money to spend. If you need any more info drop me a line or call.

The Virginia Shootout is fast approaching and we need members to sell category sponsorships. The club needs everyone to get out and beat the bushes, friends, family members and bosses for sponsorship money, ok don't beat your family. I won't do it but Tim Ward will be hounding everyone for raffle donations so if you have anything you want to donate to the raffle contact or bring it to Tim.

One show coming up in the near future is the Northern Virginia Modeler's "Model Classic" that will be at the Fairfax High School on Saturday May 22nd. Let Tim Ward know if you would like travel to the show, If there enough members going, we'll likely get the van and ride together.

That's a wrap for this month, if you have any articles, pictures or information on modeling, get it to me.

Dennis  
eastsmith1@aol.com  
540-818-8162





# FROM THE CROWS NEST

BY TIM WARD

The view from the topmast is kinda blurry lately with all the pollen and crud in the air. My little white Mini-Cooper is currently pastel yellow and washing only creates a temporary no-win situation. My eyes and head are suffering as well as I am circling the yard with the mower, which I seem to be doing on a very frequent basis, what with this beautiful weather we are enjoying. I hope you are enjoying the nice weather as well, but this article isn't about the weather or yard-work tips. It's about building models (of which I am an expert—STOP LAUGHING—THAT'S AN ORDER!!!) No seriously, it's that time of year again where we put the finishing touches on our model creations and head out to visit our friends in Region 2 and 12 (not many shows in NC this year—what's up guys??) We have a nice trip planned to NOVA next month, I may even have a model to take. If you are interested in making the trip, let me know at the next meeting so we can plan transportation and meeting times and place. Also I am currently looking into putting a trip to the Dayton Air Fair this summer (July 17-18) together. If you are interested let me

know. This will be a stay-over weekend trip with motel room sharing so plan accordingly. (no nude sleeping, please!!) Other shows are in the mix for this summer but the most important to us is our own Virginia Shoot-Out this August 14th. Are you selling your sponsorships? Are you combing your stash for raffle donations?? Are you planning to be in town that weekend??? Are you sick or hearing me bring up these questions each year?!?!?! Too bad.....it's my job, man!!! Our combined efforts will make the difference between an OK show and a great show. Please help out even if you're not the best salesman or have the biggest collection of "stuff" to donate. All help is appreciated and needed. I'd like to recognize the following two members who have already stepped up to support the show. Terry Eastman has already donated to the raffle and has sold 3 trophy packages. Thanks, Terry!! Bob Rohrback had once again graciously opened his and Sharon's home to our planning meetings and had generously donated to the raffle as well as lining up 4 or 5 trophy sponsorships already. Kudos,

Newsletter Editor - Dennis Smith  
 Eastsmith1@aol.com  
 IPMS/Roanoke Valley meets the second and fourth Thursday of every month at the Science Museum located in downtown Roanoke at the "Center in the Square". The second Thursday building meetings are held in the classroom on the fifth floor and the fourth Thursday meetings are held on the same floor in the Conference room. All meetings start at 7:00pm.

If you have any questions about the club, meetings or need directions us. Please mail all correspondence to:

**Roanoke Valley IPMS**  
**P.O. Box 20841**  
**Roanoke, VA. 24018**

Bob!! And speaking of Kudo's Jay Dennis continues to keep our web-site up to date and the central communication point for all things RVIPMS. Great job, Jay!!! You rock. Watch the web-site in the next few months for info on vendors, sponsors and raffle updates. And let's keep a good thought for Jay's mother who has been battling some health problems. We're thinking about you, Mrs. Dennis. Get well, soon. That's it from the crow's nest, the pollen is lifting and I think the grass has grown another 3 inches—drat!

Tim

## Modeler of the Year Points System

- For working on a model at the build meeting ..... 1 point
- For working on a model at a scheduled outside demo or
- Entering a completed new model in the monthly club contest..... 2 points
- For entering a new completed model in an IPMS or other contest
- Sponsored by others ..... 3 points (each model)

### RULES:

1. For build meetings or outside demos, the same model may be used for score until its completion.
2. A "new completed model" is one that has not been entered in the club contest previously unless it was a "stand alone" entry and later part of a collection, group, or diorama.
3. A "new completed model" is one that has not been entered in the same IPMS contest previously unless it was a "stand alone" entry and later part of a collection, group, or diorama. In other words, it can make the circuit but cannot be counted for points the second time around for instance in the Lynchburg Contest.
4. Contest awards do not affect the point tally.
5. For point purposes, a model is defined as any vehicle, plane, ship, building, figure (or set of figures) or any kit that normally would be considered a model if displayed alone. Conversion kits, photo etches, or other accessory sets do not count as a separate model for points.

In order for someone not to be burdened with trying to keep up with all of this, each member will be given a printed form to fill in the event, model, date and point value of each occurrence and have any fellow member initial for accuracy. Turn in the form at the end of the year and see who wins. This could be further enhanced by a "Model of the Year" club contest with the first place winners from each club meeting contest competing for an award.

Submitted by: Ed Kennedy

# NEW CONTEST ADVENTURE

On Sunday afternoon, the last day of February, Greg Clower, Bob Rohrback, Mike Powell and I left to attend a new contest in Lexington, Va. It was sponsored by D & P Crafts and Hobbies of Lexington. The shop is owned and operated by the Sheely family. They wanted to promote the model building hobby in the local area and decided to hold a contest for their customers. I had met earlier with Dane Sheely and we discussed a few of the rules and their desire to form an IPMS chapter in that area.

After a lunch with Elvis at The Pink Cadillac restaurant on



Rt. 11 going into Lexington, the four of us from Roanoke met at the Rock-bridge County Library with the sponsor and contestants. The library had a perfect meeting room for that type of occasion, away from the

bookroom where we could mingle and talk.

Aside from the models that we had brought from Roanoke for display only, there were 7 or 8 total entries to compete for first, second and third. This was very exciting for everyone involved as it was the first of any type of modeling competition they had been involved in. Dane Sheely asked if the members of RVIPMS would like to judge, so Greg, Mike and I agreed and approached the table attempting to appear as somber professionals.

This is where the fun began. As we knelt to observe the first entry, all of the contestants surrounded us like yellow jackets on an open Coke can. We took it in stride for a moment as we discussed the first entry, not wanting to upset anyone by citing the regular rule of "not hanging over the judges". Then we realized that these guys wanted to learn from what we had to offer. So, we mildly critiqued each entry, pointing out what IPMS judges were looking for. It became an exercise in the basics of plastic modeling which most of them had not been introduced to. We also pointed out the good aspects of a build and how to expand on them. As their enthusiasm grew so did the



questions and it took awhile to judge the few entries. After the judging, Bob took some time to critique some of his own models as further benefit



to the entrants. In the end, the first three places were chosen and awards were given in the form gift certificates to the shop.

My thanks to the Sheelys for inviting us and I expressed the desire of RVIPMS to help in any way with the formation and promotion of their chapter.

If by chance, you should travel to Lexington, which is about an hour from Roanoke, be sure to stop by D & P Crafts and Hobbies at 105 N. Main St. They have a good stock of plastic models and a great selection of modeling supplies as well as other hobby and craft items. While you are at it, walk up and down Main Street as this wonderful little town abounds with history.

Ed Kennedy



# MDA<sup>®</sup>

## Model Car Contest



**MARCH 6, 2010  
ROANOKE CIVIC  
CENTER  
ROANOKE, VA**

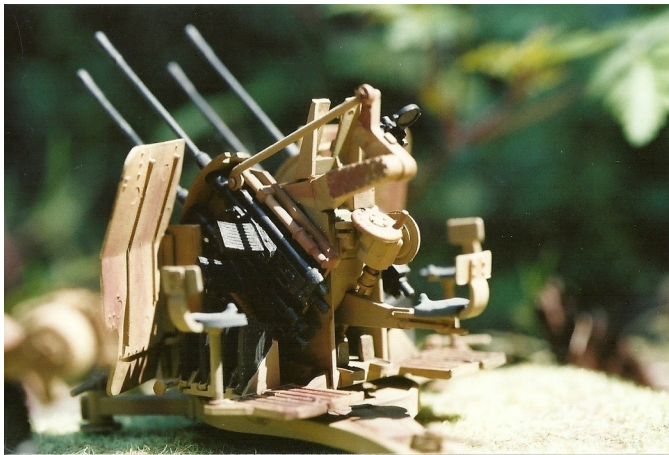
Just a few of the 386 model cars in competition at the MDA Model Car Contest held at the Roanoke Civic Center.



# LIBERATION OF VILLAGES IN THE AREA OF FONTAINEBLEAU, FRANCE, AUGUST 1944

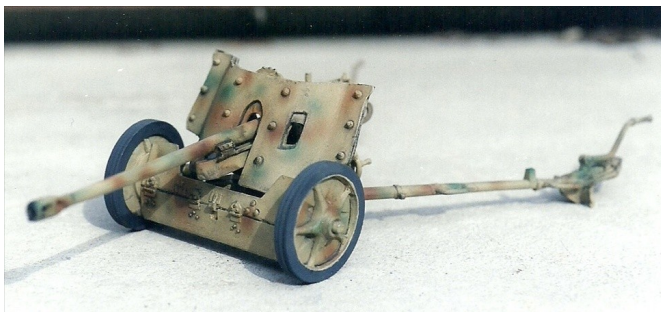
Courtesy of: Dr. Jacques Hitzel ([www.jhitzel@wanadoo.fr](http://www.jhitzel@wanadoo.fr))

In late August 1944, the retreating Germans passed through this area, and in the Village of Vulaines partially destroyed a bridge over the Seine River. G.I.'s attempting to cross over on the remaining spans of the bridge were stopped by a flak unit hidden on the other side of the river.



M10 positioning for the kill

A Captain Jack Gerrie swam across the river, and located where the flak unit was located. He returned to the other side, and contacted an M10 that was nearby. This was on the 23<sup>rd</sup> of August, and the M10 was from 818<sup>th</sup> Tank Destroyer Battalion. A well placed shot ended this episode. There is a photo of the actual destroyed flak unit, and the M10 in position to bring about le coup de grace. Jacques has modeled the M10 and flak unit. Note: The "pink" drape on the tank is authentic. G.I.'s had dyed bed sheets as air recognition to indicate that advanced units were in contact with the enemy.



Next is a PAK 38 that was actually abandoned on the property of Jacques grandparents, and this leads to another story. A small village named Hericy is where a PAK 40 destroyed a Sherman. The officer in charge and his crew were killed. To this day, a well maintained memorial is in place to document their sacrifice. (This incident took place on 25 August 1940.)

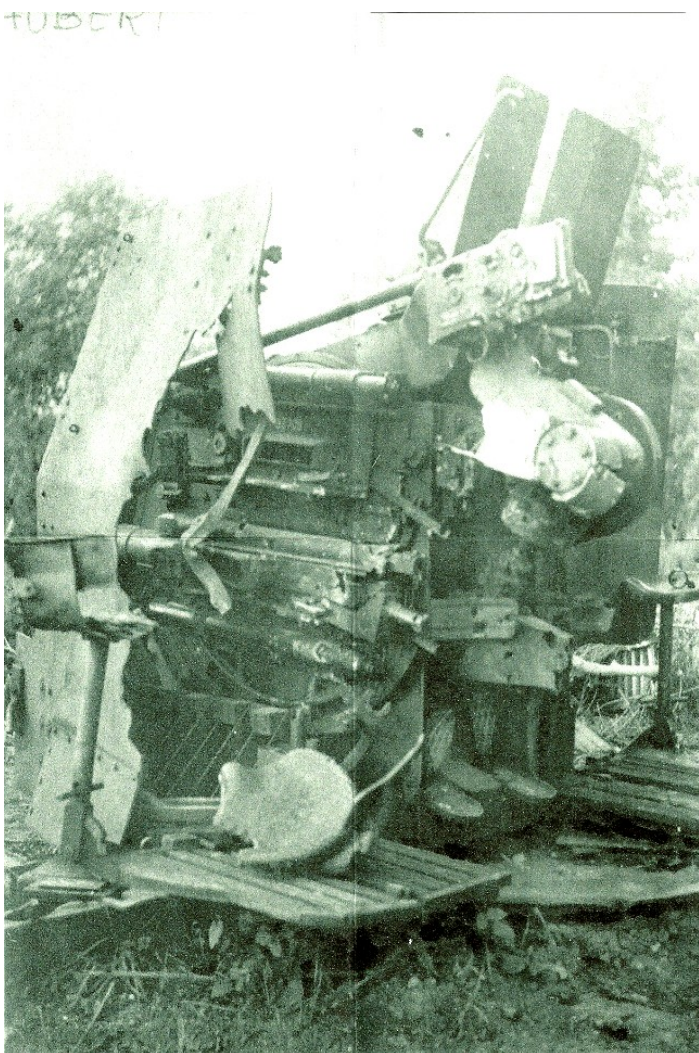


The Memorial to the fallen American soldiers as it appears

Following is a PzKw IV that was abandoned in Vulaines. Also a Somua S35 used by the Germans that was destroyed by a bazooka.



Well done examples of an M20 Armoured Scout Car, U.S. Army Medical Corps Ambulance, and a Dodge water tanker. All of these 1/35th scale models were done based on photographic documentation.



The actual Flak Unit that was destroyed by the M10 Tank



# RVIPMS Springnationals Model Car Gravity Drags

May 27, 2010

The Virginia Museum of Transportation Conference Room - 7:00pm

## Car Classes and Rules

### Pro Modified

1. Cars are to be 1/24 or 1/25 scale plastic models.
2. Maximum weight of model cannot be more than 8 ounces.
3. Any type of wheel, tire and axle may be used.
4. Models must have 4 wheels that touch the track and be able to roll.

### Box Stock

1. Cars are to be 1/24 or 1/25 scale plastic models of passenger vehicles.
2. Cars must use wheels, tires and axles supplied in the kit.
3. You may use any kit parts supplied in the box.
4. Models must have full interiors.

## 2010 Roanoke Valley IPMS Club Championship Points Format

RVIPMS Club Championship points can be gathered in many ways. Model building will be the main focus although other club activities will garner points. This gives everyone a chance to be a model citizen.

### Monthly Club Contests

|               |          |
|---------------|----------|
| First Place   | 9 Points |
| Second Place  | 5 Points |
| Third Place   | 2 Points |
| Participation | 1 Point  |

### Club Activities

|                                  |          |
|----------------------------------|----------|
| Participating in Club Activities | 5 Points |
| Meeting Attendance               | 2 Points |

### Publishing / Promotion

|   |          |
|---|----------|
| Signing up a new member                         | 5 Points |
| Submission to the Newsletter                    | 5 Points |
| Picture of your model in a national publication | 6 Points |
| Article in a national publication               | 8 Points |

### 2010 Shootout Participation

|                                      |           |
|--------------------------------------|-----------|
| Raffle Donation                      | 5 Points  |
| Work / Contribute to the Shootout    | 5 Points  |
| Entering models in the 2010 Shootout | 10 Points |

### The Most Contest Sponsorships Sold

|              |           |
|--------------|-----------|
| First Place  | 10 Points |
| Second Place | 5 Points  |
| Third Place  | 2 Points  |



April \_\_\_\_\_

22 - RVIPMS Business Meeting, Virginia Transportation Museum

May \_\_\_\_\_

13- RVIPMS Build Meeting, Virginia Transportation Museum

22- Northern Virginia Model Classic, IPMS/ Northern Virginia Modelers, Tom Henderson, 703-680-9354

27 - RVIPMS Business Meeting, Virginia Transportation Museum

June \_\_\_\_\_

10 - RVIPMS Build Meeting, Virginia Transportation Museum

26 - D&J Hobby Center Annual Hobby Show, Galax City Library 610 West Stuart Drive Galax, VA 24333, (276) 236-6863

**Club Officers Re-elected for the 2010 Fiscal Year**

- President**  
Dennis Smith  
eastsmith1@aol.com
- Vice-President**  
Terry Eastman  
t.eastman1@verizon.net
- Secretary**  
Bob Rohrbach  
rjrohrback@aol.com
- Treasurer**  
Greg Clower  
GClower@aol.com



**Model Classic 2010 - Heroes & Villains**  
Saturday, May 22, 2010 9:00 AM – 4:00 PM  
Fairfax High School  
3500 Old Lee Highway, Fairfax, VA



**Model Contest & Show**  
**August 14, 2010**  
**Roanoke Civic Center**  
**Roanoke Virginia**

**IPMS/USA NEW MEMBER APPLICATION**

IPMS No: \_\_\_\_\_ Name: \_\_\_\_\_  
(leave blank) FIRST M LAST  
Address: \_\_\_\_\_  
City: \_\_\_\_\_ State \_\_\_\_\_ Zip \_\_\_\_\_  
Phone: \_\_\_\_\_ email: \_\_\_\_\_  
VISA/MasterCard: \_\_\_\_\_ Account #: \_\_\_\_\_ - \_\_\_\_\_ - \_\_\_\_\_  
Exp. Date: \_\_\_\_\_  
Signature: \_\_\_\_\_  
\_\_\_\_ Adult \$25 \_\_\_\_ Junior (17 years old or younger) \$12 DOB: \_\_\_\_\_  
\_\_\_\_ Canada & Mexico: \$30 \_\_\_\_ Other Foreign: \$32 \_\_\_\_ Foreign Air Mail: \$55  
\_\_\_\_ Family (Adult Dues + \$5, one set magazines # of membership cards required: \_\_\_\_)  
\_\_\_\_ If recommended by an IPMS Member,  
List his/her name and member number \_\_\_\_\_ (name) \_\_\_\_\_ (IPMS#)

**IPMS/USA** P.O. Box 2475  
Check out our web page: [www.ipmsusa.org](http://www.ipmsusa.org) North Canton, OH, 44720-0475

**ATTENTION !!!**

**The April Business Meeting will be on the 22th at the Virginia Museum of Transportation**

**The April Business Meeting Contest is Open Category**

***Build it  
Bring it !!***

Sprue is the official publication of the Roanoke Valley Chapter of the International Plastic Modelers Society. The content of Sprue does not necessarily represent the official views of, nor is it endorsed by IPMS/USA or IPMS/Roanoke Valley. Opinions expressed are those of the authors.